

Foundational Goal Of “Plan Change 14” Is False

14 November 2023

Ian McIntosh
(B.App.Sci.Rur.Tech.
(Hons))

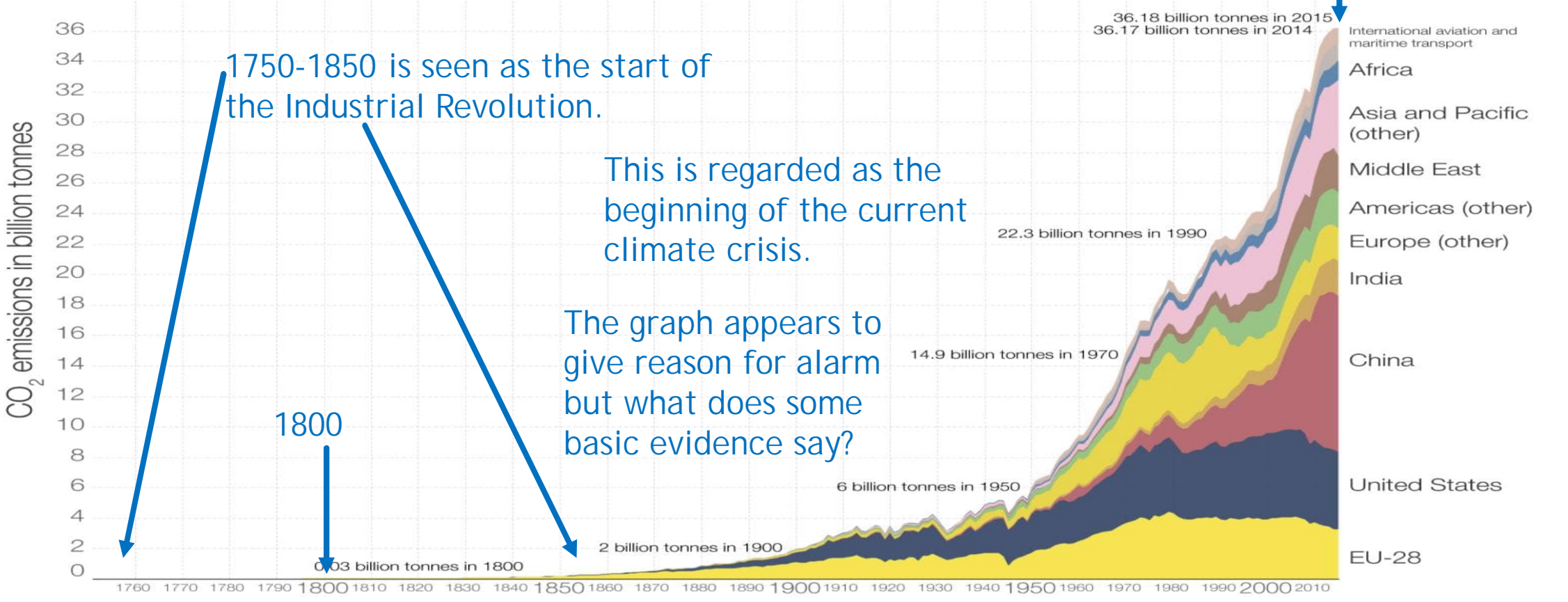
“We need to provide for the growth of housing and commercial centres in the best locations, to help address issues such as **climate change** and housing affordability.”

(Plan Change 14)

From 1800 until 2015, Man Has Increased Carbon Emissions From About 30 Million Tonnes/Yr To 36.2 Billion By Burning "Fossil" Fuel Equals 1,200 fold or 120,000% increase.

Global CO₂ emissions by world region, 1751 to 2015

Annual carbon dioxide emissions in billion tonnes (Gt).



Data source: Carbon Dioxide Information Analysis Center (CDIAC); aggregation by world region by Our World In Data. The interactive data visualization is available at OurWorldInData.org. There you find the raw data and more visualizations on this topic.

Licensed under CC-BY-SA.

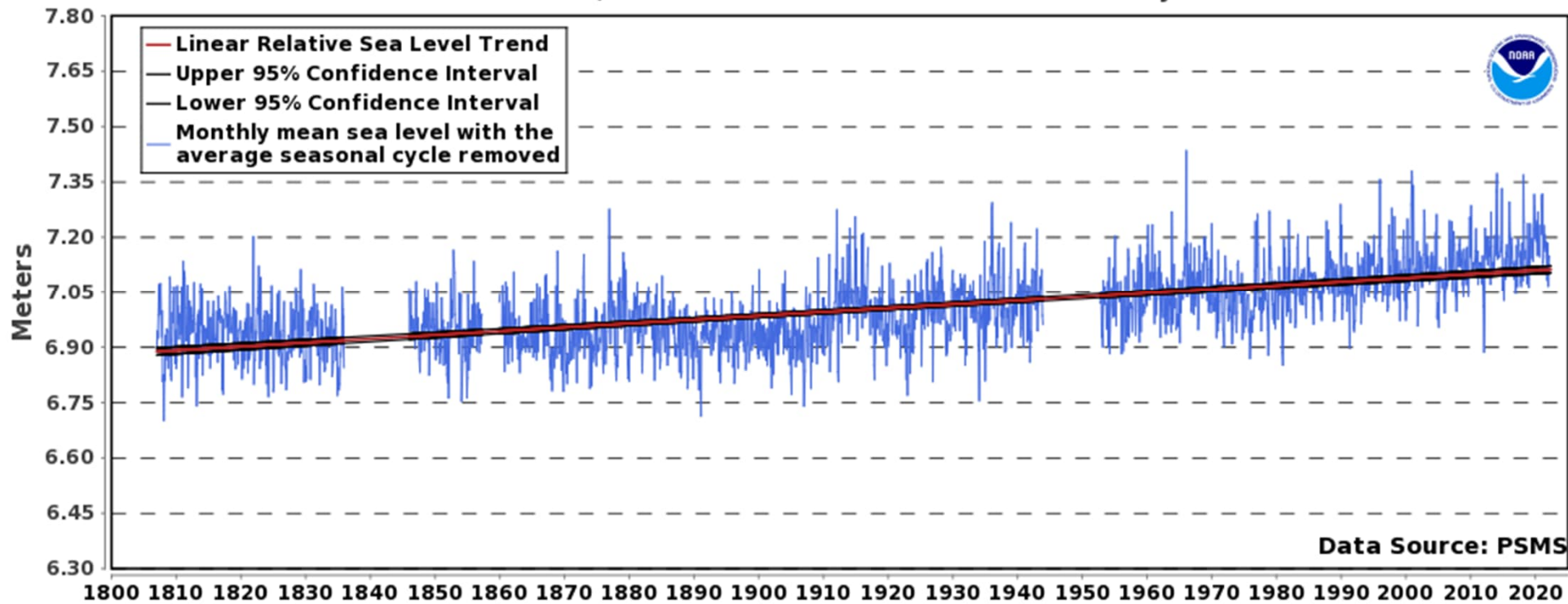
This Is The Sea Level Data Since 1807 From NOAA For Brest (France).

National Oceanic & Atmospheric Administration Is A
US Gov't Department.

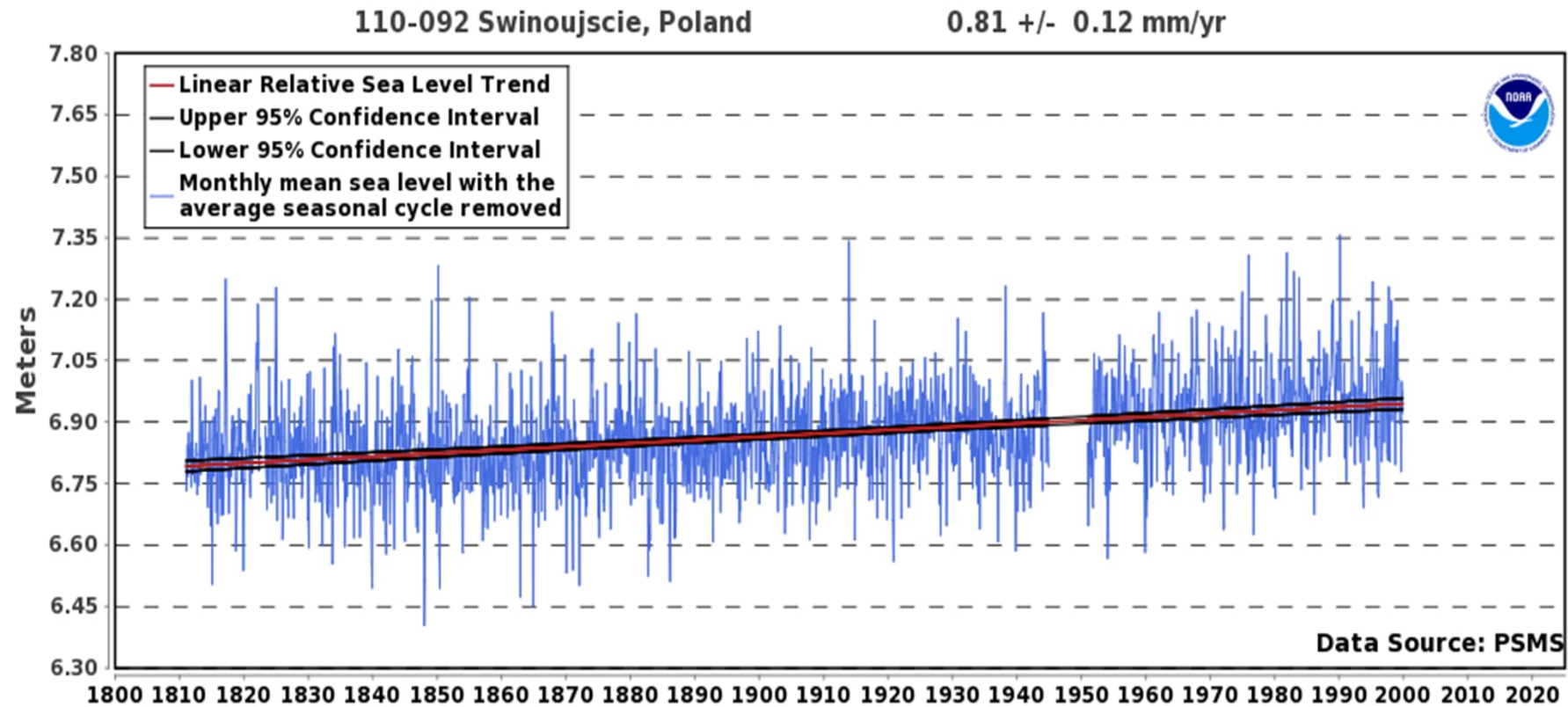
https://tidesandcurrents.noaa.gov/sltrends/sltrends_station.shtml?id=8518750

190-091 Brest, France

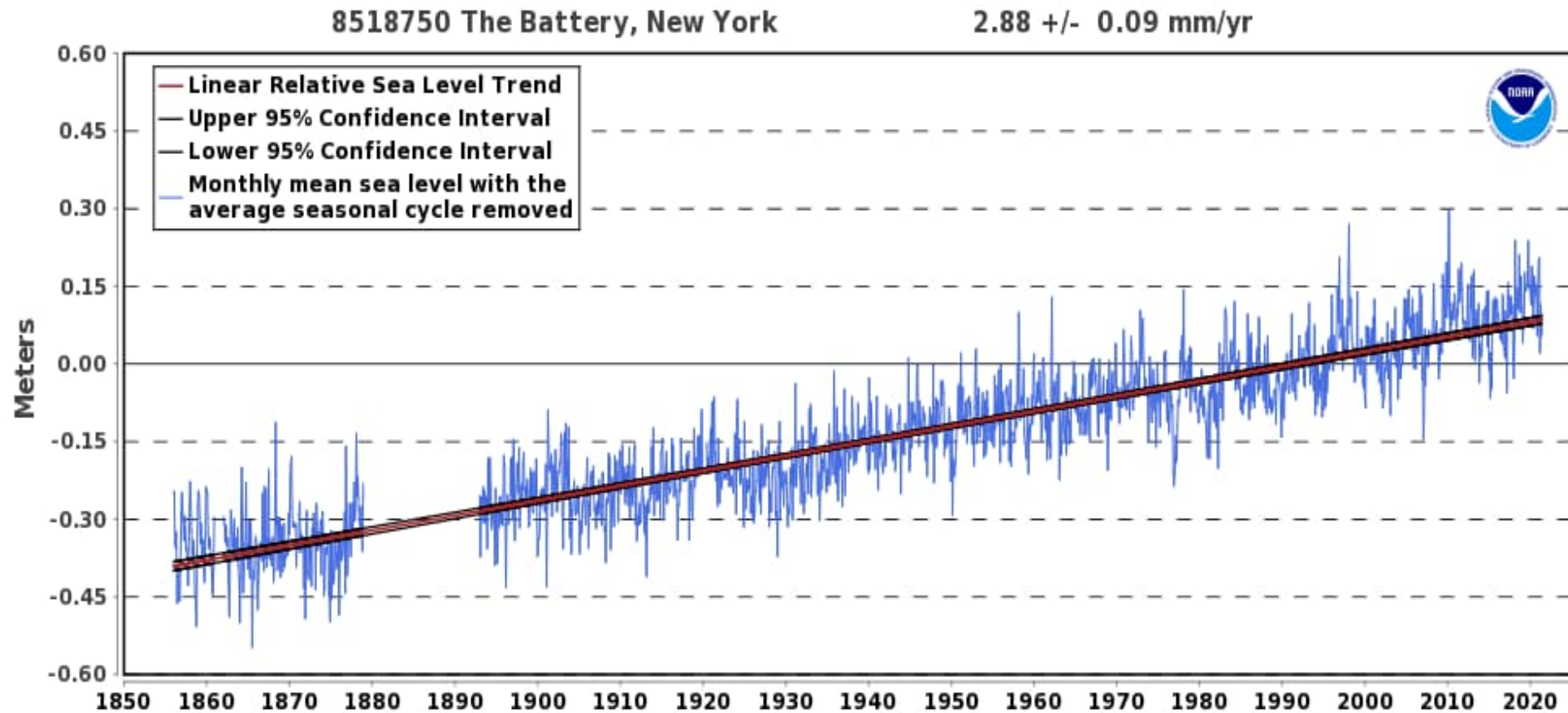
1.04 +/- 0.08 mm/yr



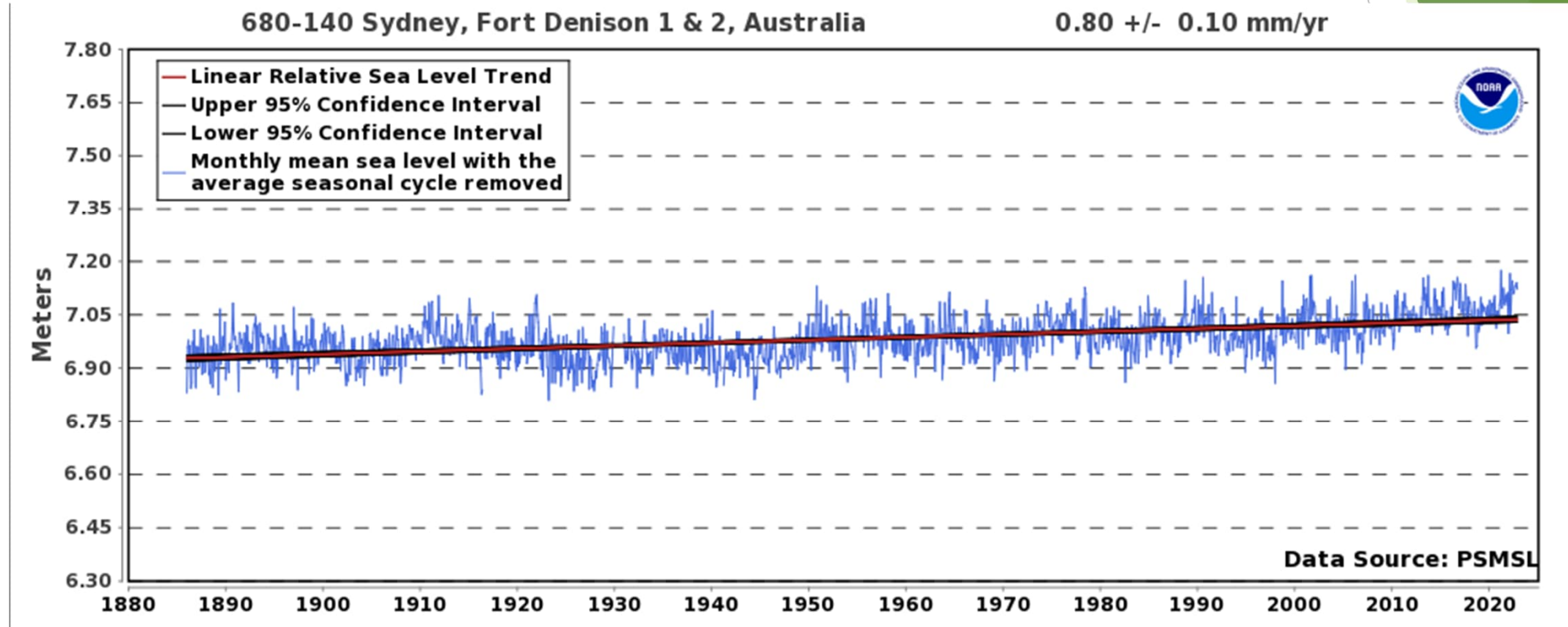
The same linear trend has occurred since 1810 in Poland



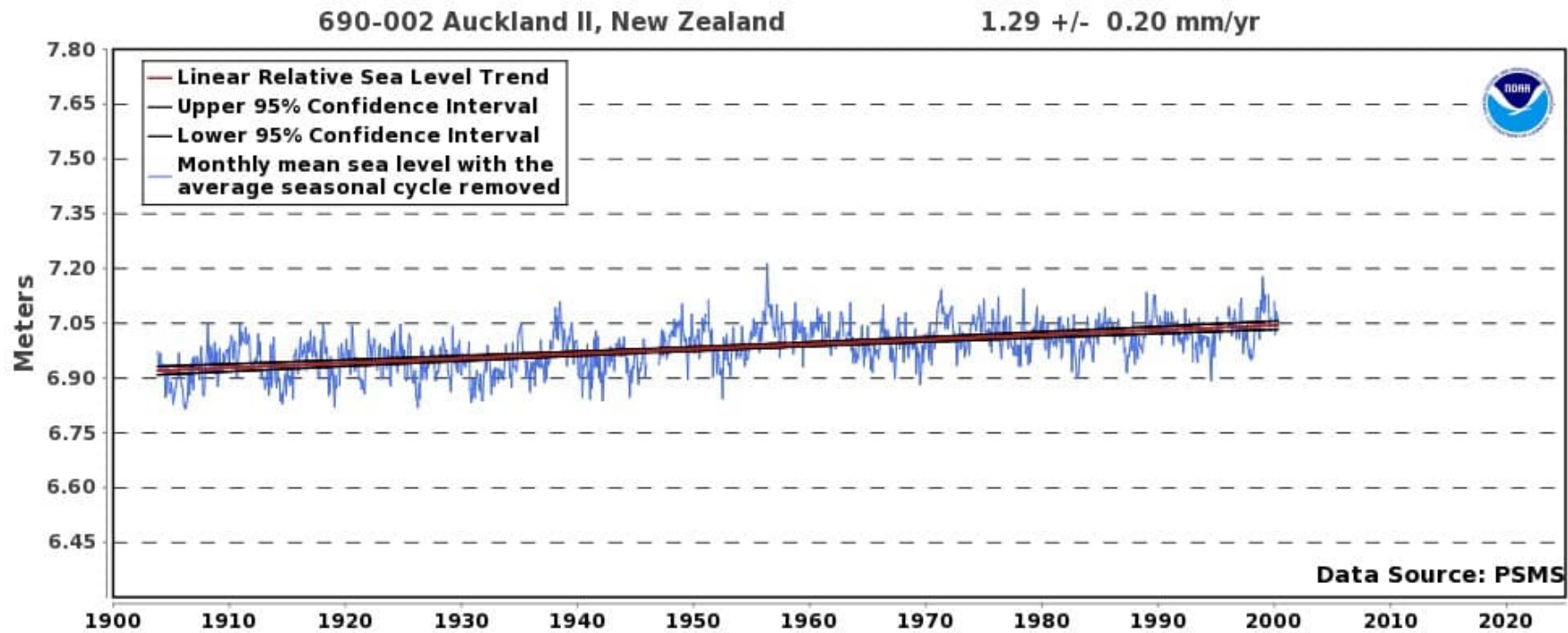
“The Battery” In New York Shows The Same Linear Trend Since 1855



“Fort Denison” In Sydney Shows The Same Linear Trend Since 1885

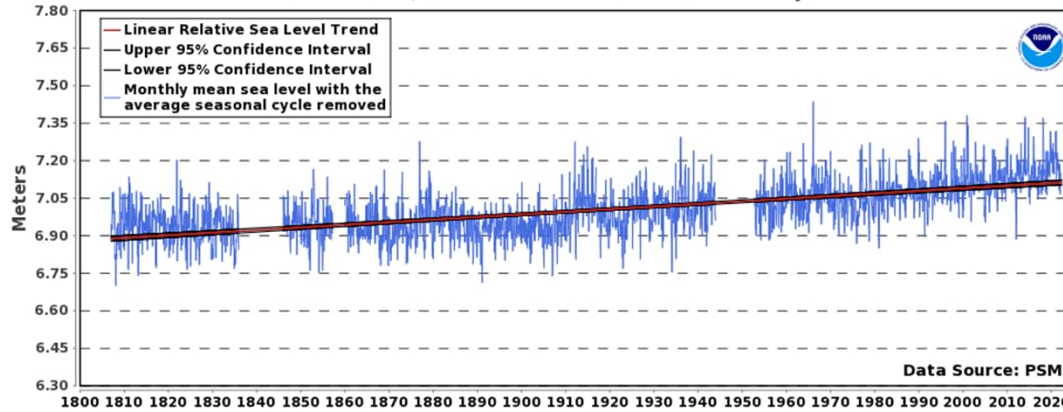
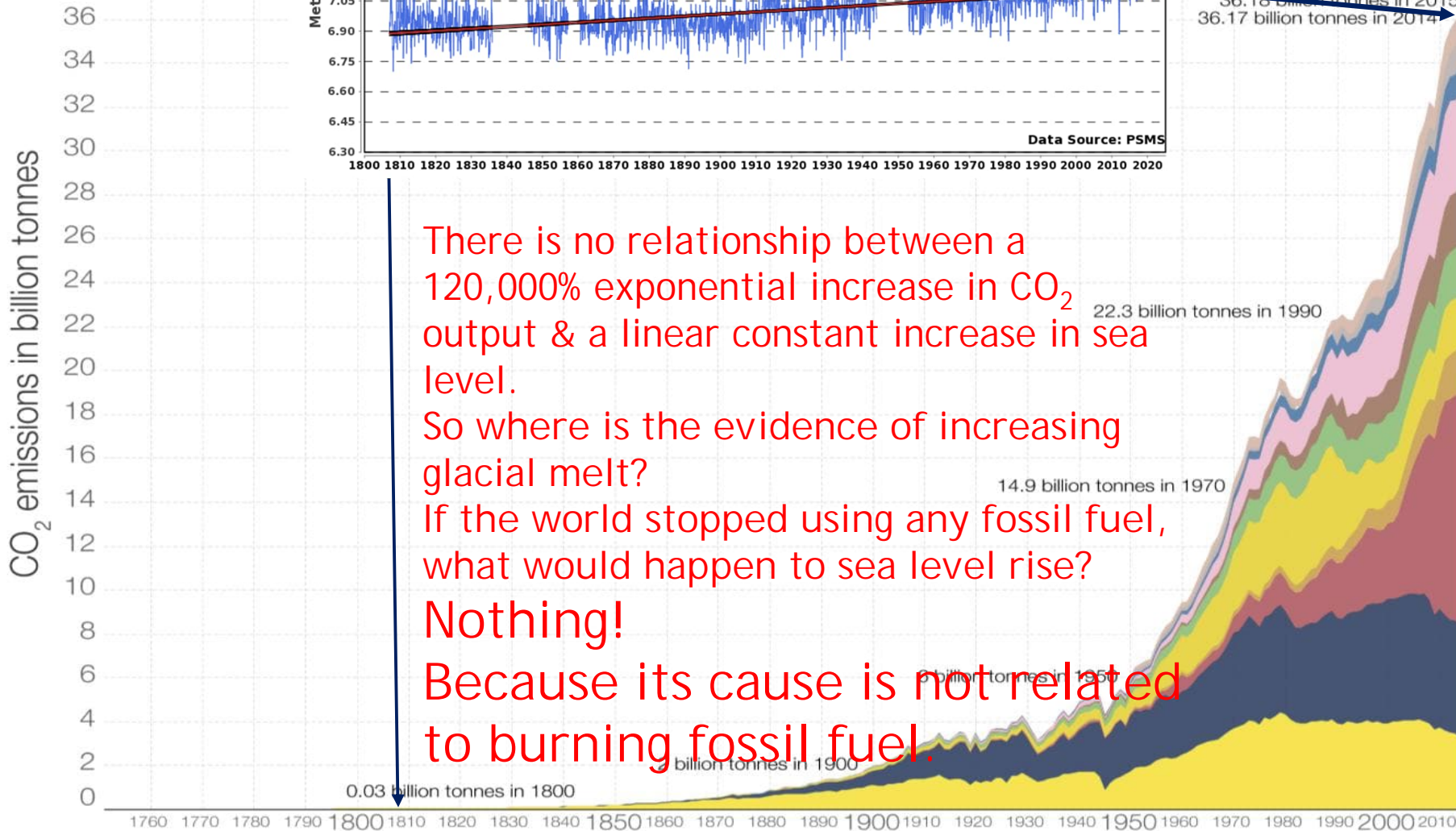


Auckland Shows The Same Linear Trend Since 1905



What Is The Relationship Between Sea Level Rise & Carbon Emissions?

Global CO₂ Annual carbon dioxide



There is no relationship between a 120,000% exponential increase in CO₂ output & a linear constant increase in sea level.

So where is the evidence of increasing glacial melt?

If the world stopped using any fossil fuel, what would happen to sea level rise?

Nothing!

Because its cause is not related to burning fossil fuel.

Global

Annual car

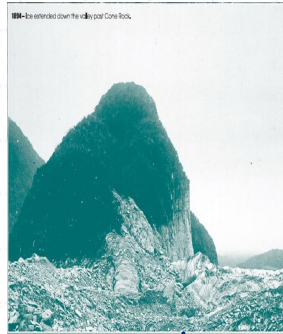
on tonnes



Glacier Bay, Alaska. Eyewitness accounts show its ice was melting from at least 1750.



Warming winters in London caused the last Frost Fair on the Thames to be held in 1814 / 15



Cone Rock at Fox Glacier highlights that the ice dramatically receded over 54 years.

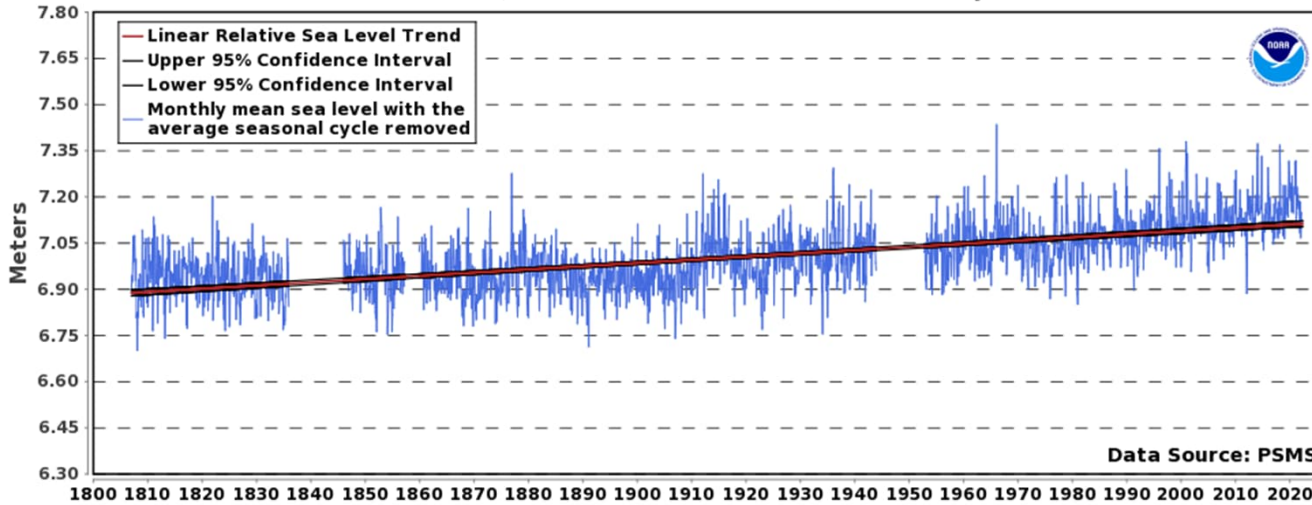


14.9 billion tonnes in 1970

6 billion tonnes in 1950

2 billion tonnes in 1900

0.03 billion tonnes in 1800



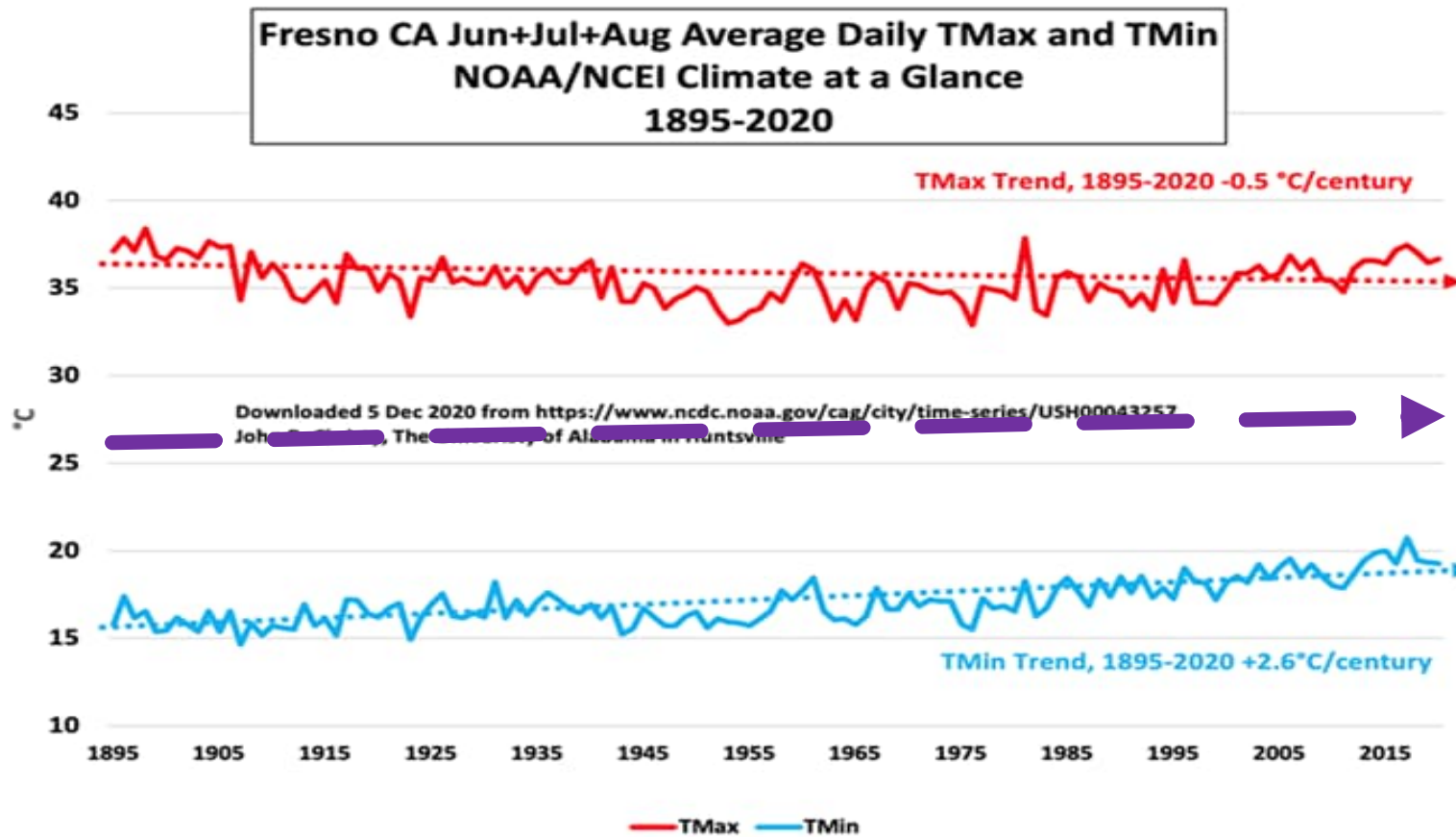
2015

18 billion tonnes in 2015
14 billion tonnes in 2014

How come we are blaming the burning of "fossil" fuels for:

- melting glaciers & the corresponding sea level rise when,
- we know from eye witness accounts from before the industrial revolution (1760-1850),
- that the ice was already melting &
- has done so at a constant rate since at least 1807.

The Average Temp Is Gradually Increasing, But At Fresno (California) It Is Not The Maximums, Rather It Is The Warming Minimums, As Shown Since 1895.



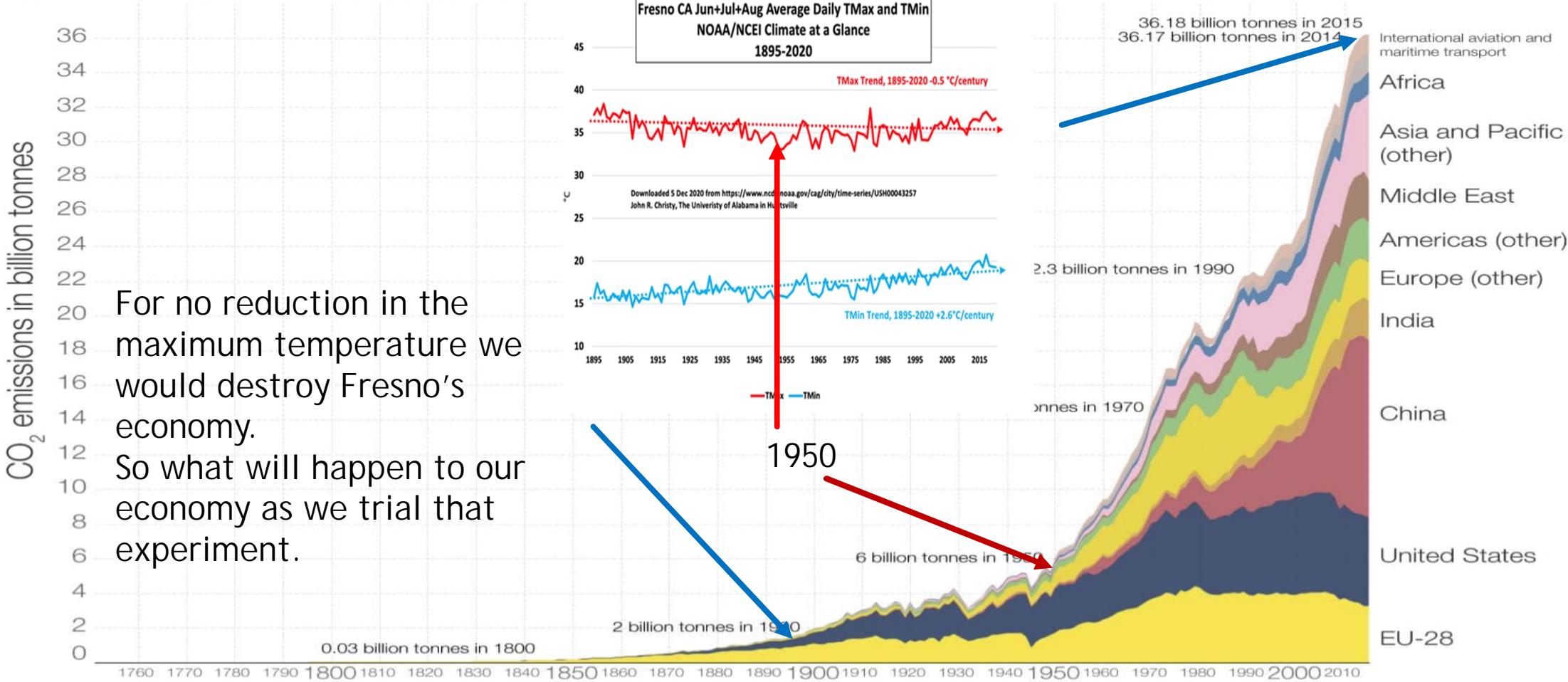
Av temp increase of $1.05\text{ }^{\circ}\text{C}/\text{century}$

With Over 100 Yrs Of Temperature Data At Fresno (California) We Can See What Will Happen To Our Economy If We Reduced Carbon Emissions By 84% To 1950 Levels For Example.

Global CO₂ emissions by world region, 1751 to 2015



Annual carbon dioxide emissions in billion tonnes (Gt)

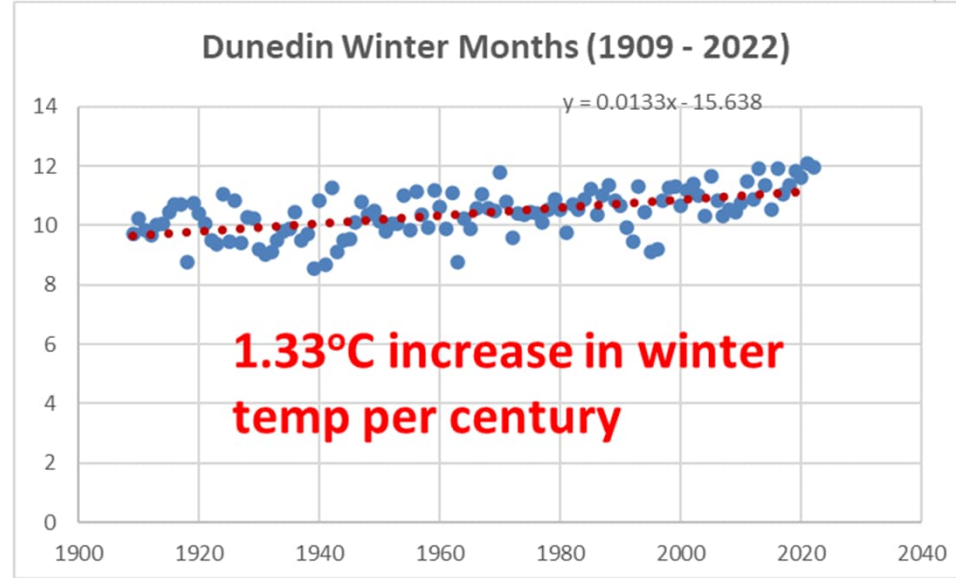
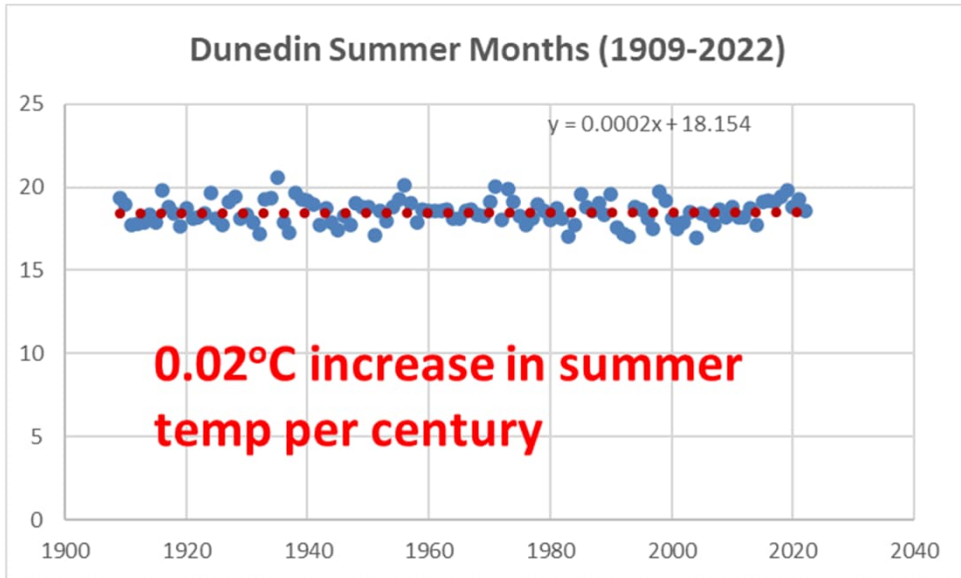


For no reduction in the maximum temperature we would destroy Fresno's economy. So what will happen to our economy as we trial that experiment.

Data source: Carbon Dioxide Information Analysis Center (CDIAC); aggregation by world region by Our World In Data. The interactive data visualization is available at OurWorldinData.org. There you find the raw data and more visualizations on this topic.

Licensed under CC-BY-SA.

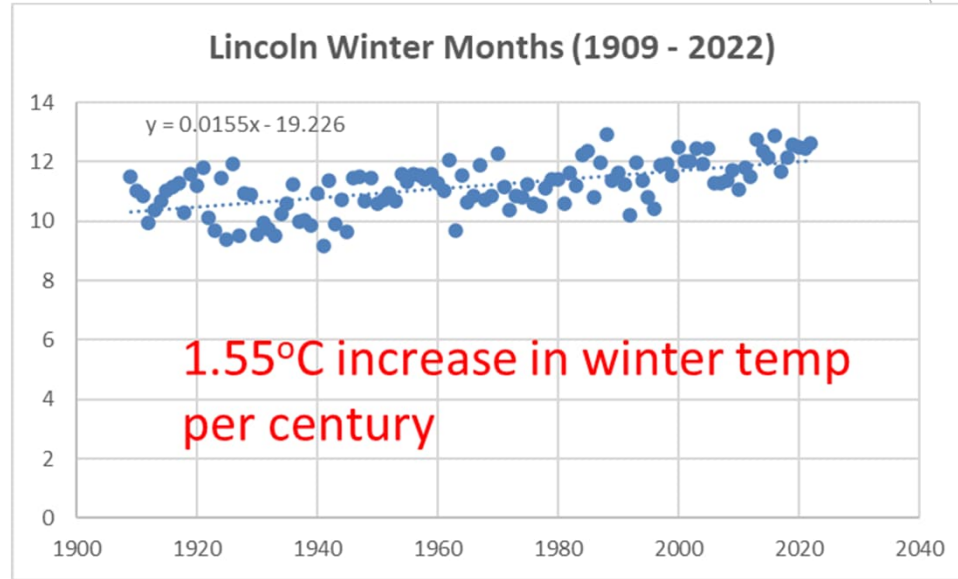
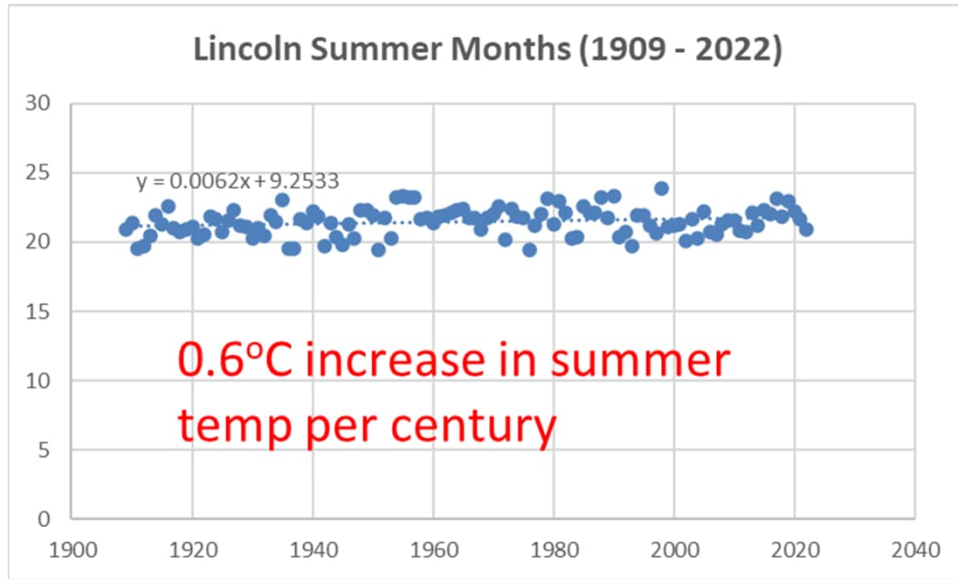
A Similar Trend At Dunedin (NZ) Over 114 Yrs



Remember it was the warming winters in London that caused the last Frost Fair on the Thames to be held in 1814 / 15

So warming winters have eyewitness accounts since at least 1814/15, so why are we making climate change a foundational reason for PC14?

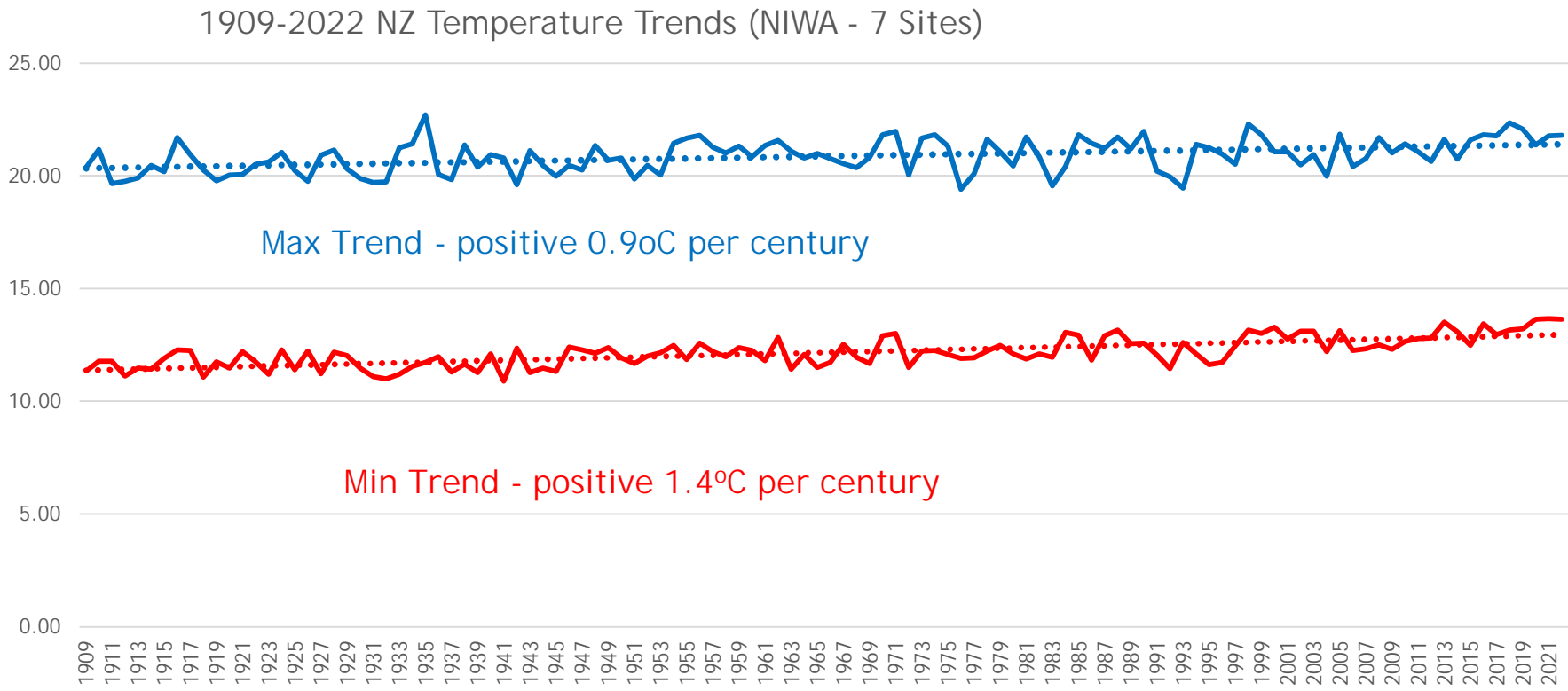
A Similar Trend At Lincoln (NZ).



This explains why eyewitness accounts from a recently deceased Cantabrian who died just short of his 100th birthday, were that he used to see icebergs coming down the Rakaia Gorge when he was a child.

So why are we making Climate Change a foundational reason for PC14 when a slow constant increase in seal level and a slow increase in temperature (mainly minimum's) has been occurring in Canterbury for over 100 years.

NIWA's Data Shows That It Is The Warming Minimum's (Winters) That Are The Biggest Influence On Warming Average Temperature's In NZ.



Summary of NIWA's "Seven-Station" Temperature Series, December 2010

What Is Happening To Wind Strength In Canterbury?

The SAM index is shown in Figure 5. SAM changes at a weekly timescale and can be used for short term forecasting. There is a long term trend in the SAM towards higher values indicating that climate change is leading to less frequent and weaker westerly winds over the South Island.

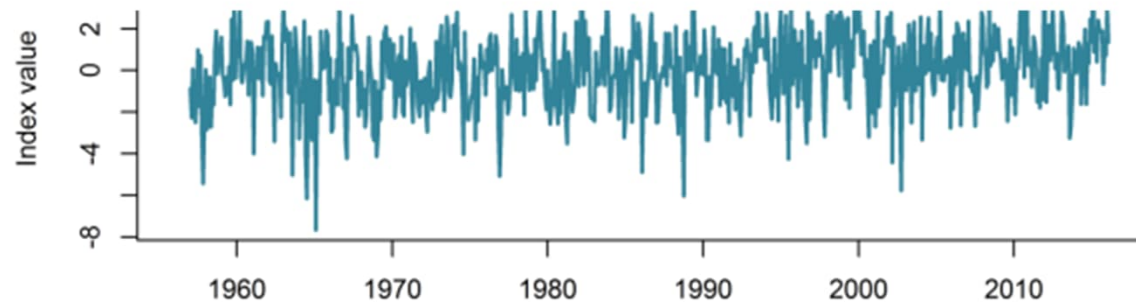


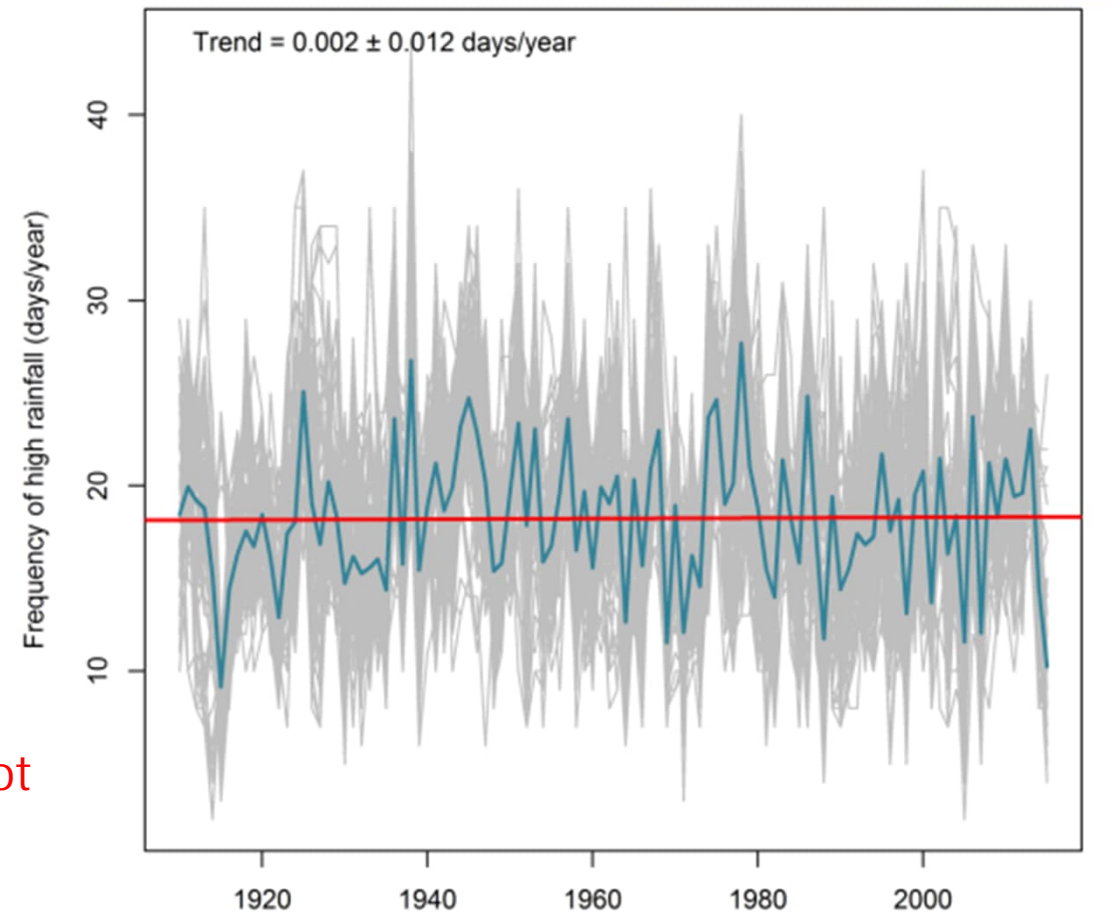
Figure 5. Southern Annual Mode (SAM)

What Is Happening To Rainfall Extremes In Canterbury?

- ▶ The time series of annual frequency of rainfall for all 126 stations together with the mean, is shown in Figure 7. Analysis of the mean of these time series shows no long term trend, no statistically significant correlation to the ENSO and SAM signals, and no statistically significant differences between annual frequencies for the different IPO phases.

Figure 7. Time series of annual frequency of high rainfall for 126 rainfall sites within 10 km of the Selwyn District. The bold line is the mean.

No statistical long term trend for over 110 years does not support a looming crisis

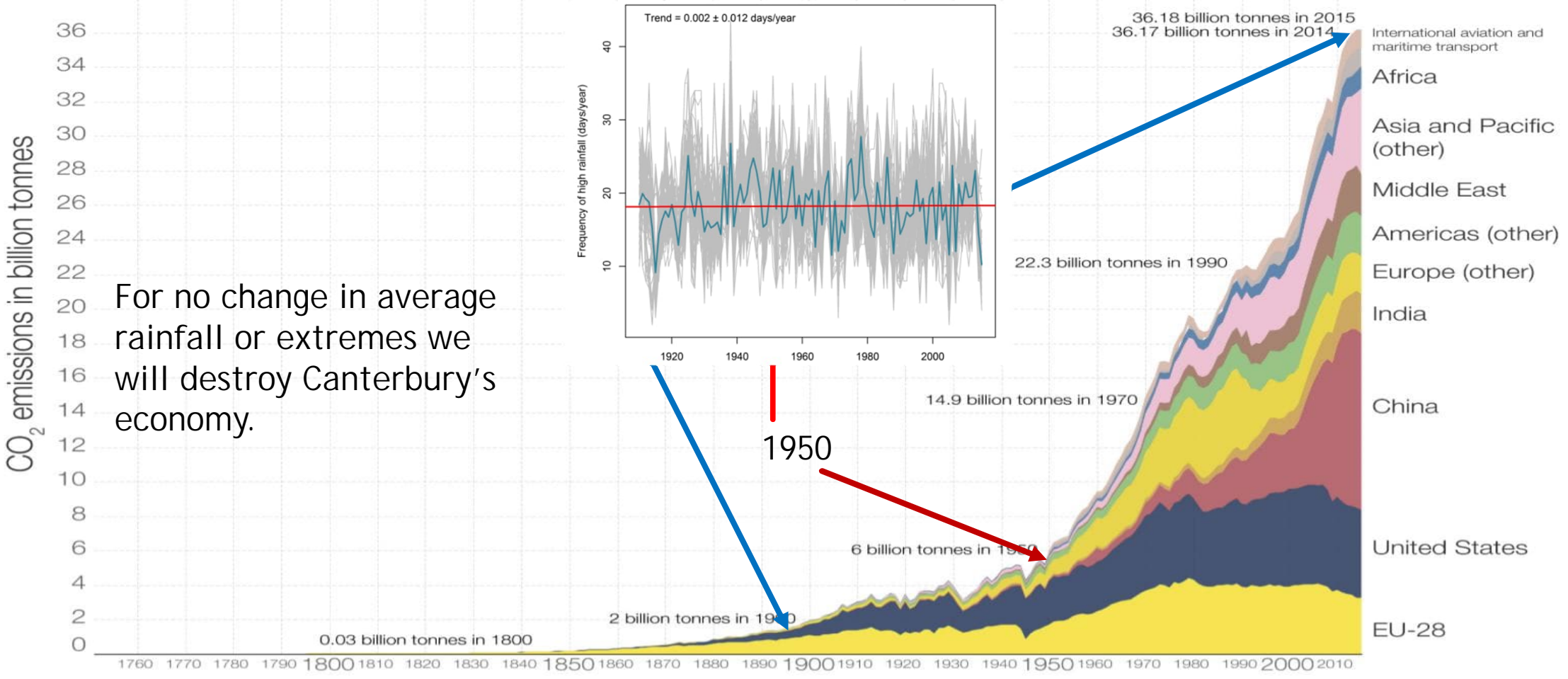


With Over 100 Yrs Of Rainfall Data For Selwyn We Can See What Will Happen To Its Economy If They Reduced Carbon Emissions By 84% To 1950 Levels For Example.

Global CO₂ emissions by world region, 1751 to 2015



Annual carbon dioxide emissions in billion tonnes (Gt).



For no change in average rainfall or extremes we will destroy Canterbury's economy.

Data source: Carbon Dioxide Information Analysis Center (CDIAC); aggregation by world region by Our World In Data. The interactive data visualization is available at OurWorldinData.org. There you find the raw data and more visualizations on this topic.

Licensed under CC-BY-SA.

Don't repeat history
by not having all the
truth



Ruins of the CTV Building, 24
February 2011

The CTV Building was designed and constructed in about 1986.^{[1][4]} Christchurch City Council gave building consent in September 1986.^[5] Building codes for earthquake design changed frequently in Christchurch City Council gave building consent in September 1986.^[5] Building codes for earthquake design changed frequently in building joints yield in design earthquake events, which might make effect in New Zealand in 1982.^[4] Stefano Pampanin, an associate professor at the University of Canterbury who teaches in structural and seismic design,^[7] described the non-ductile philosophy as "an obsolete design based on the levels of knowledge and code provisions that existed before the mid-1980s".^[8] The structural obsolete design based on the levels of knowledge and code provisions that existed before the mid-1980s".^[8] The structural design engineer was Alan Reay Consultants (named after the company's owner) and the architect was Alun Wilke Associates Architects, both of which are firms based in Christchurch.^{[2][9]}

The CTV Building was inspected by engineers after the 4 September 2010 Canterbury earthquake and after the 26 December 2010^[10] 4.9 magnitude aftershock. On both occasions, the building was declared safe, having suffered only superficial damage.^{[11][12]} The building collapsed in the 22 February 2011 earthquake and, due to its high death toll of over 100 people, has become one of the symbols of the earthquake.^[8]

laSM3

Questions For You

What does it mean for you & our children if like the CTV building, the dominant narrative (on climate change) is wrong & we spend over \$4 billion for nothing?

So what do you do about it?

Answer:

Unlike the CTV building, consider all of the evidence in your decisions, including from people like me.

I will need 60 mins of your time to show that man has little or no impact on climate, one of the main reasons given for PC14.

And President Obama's Chief Science Advisor Agrees That Man Has Little Impact On Climate,
And So Does The Co-founder Of Greenpeace.

Other Resources

<https://realitycheck.radio/ian-wishart-a-deep-dive-on-climate-propaganda-niwas-missing-data/>

Investigative journalist Ian Wishart shows that NIWA have not been truthful on the NZ historic storm data

<https://realitycheck.radio/prof-geoff-duffy-on-why-water-vapour-is-a-dominating-player-in-our-atmosphere/>

Prof Geoff Duffy with Jaspreet & Don 26 June 23

<https://realitycheck.radio/barry-brill-on-manmade-climate-change/>

29 June 23 - Barry Brill with Rodney Hide

<https://www.youtube.com/watch?v=I90FpjPGLBE>

Pres. Obama's chief science advisor Prof Steven Koonin says we have nothing to worry about & the IPCC says the same.

https://www.youtube.com/watch?v=Moum_SZ5NNY

The earth's surface temperature data has been cherry picked by NOAA (Prof Richard Muller) to bias the evidence toward alarm.

<https://www.youtube.com/watch?v=KN9eGdI5OoI&list=PLWNxhy3V6nqMyBz6neVMdWDZSoyLkHaDU&index=6>

The Great Barrier Reef now covers the largest area in recorded history.

Thank You

My email is

iansteph67@outlook.com