

## APPENDIX M – RESPONSE TO REQUEST 79

1. The Panel's request #79 is:

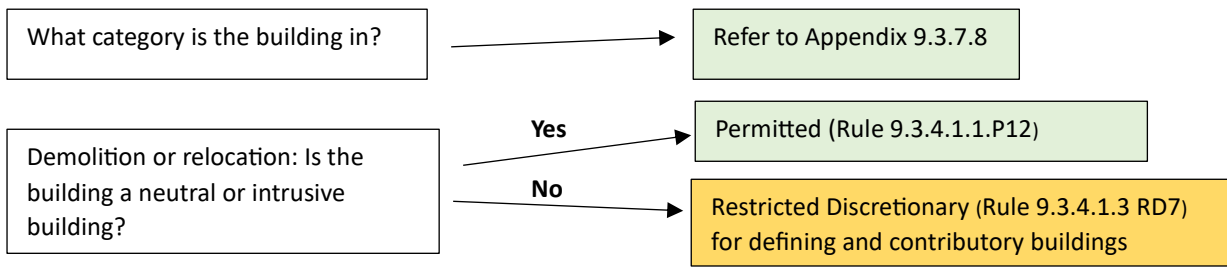
*For RHAs, provide a diagram showing the linkage between the policies (including any direction such as avoid / manage / etc), rule triggers (including exceedances of built form standards) and activity status for relevant activities, for both the notified and current recommended versions of Plan Change 14.*

2. Diagrams prepared by Ms Dixon in response to request #79 is **overleaf**.

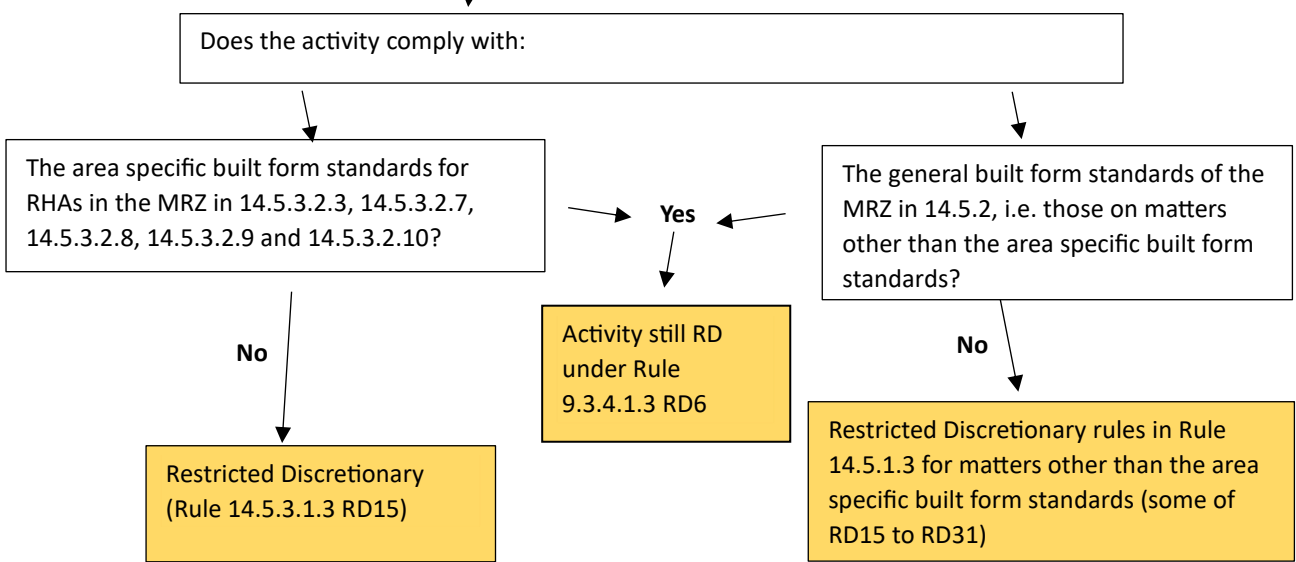
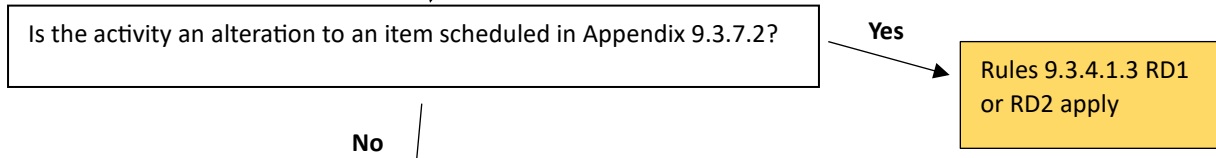
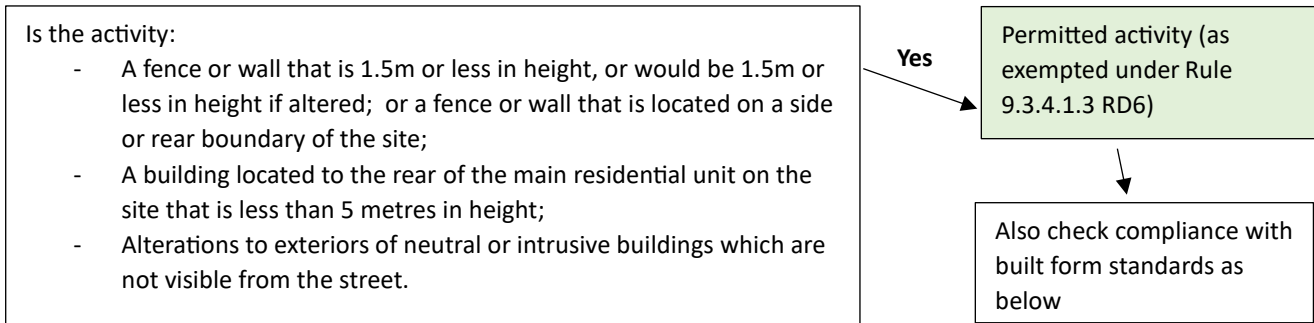
## RESIDENTIAL HERITAGE AREAS – AS NOTIFIED

### 9.3.2.2.2. Policy – Identification, assessment and scheduling of heritage areas

- a. Identify heritage areas which represent important aspects of the Christchurch District’s cultural and historic themes and activities and assess them for significance to the Christchurch District according to:
  - i. whether the heritage area meets at least one of the heritage values in Appendix 9.3.7.1 at a significant or higher level; and
  - ii. the extent to which the heritage area and its heritage values contributes to Christchurch District’s sense of place and identity; has at least a moderate degree of integrity and authenticity; is a comprehensive, collective and integrated place, and contains a majority of buildings or features that are of defining or contributory importance to the heritage area.
- b. Schedule historic heritage areas that have been assessed as significant in accordance with Policy 9.3.2.2.2.(a).



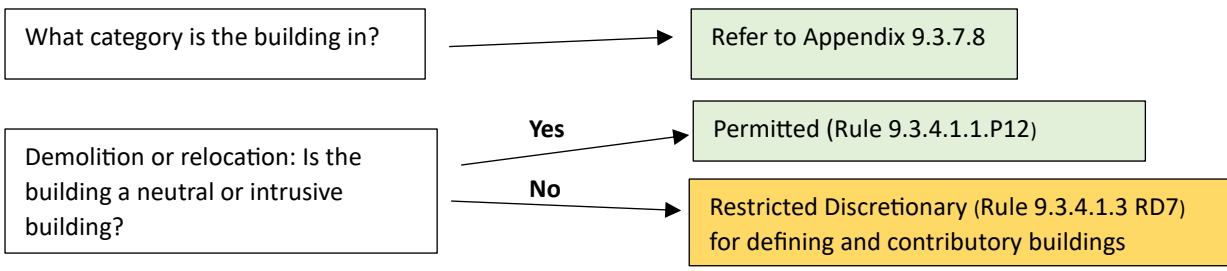
New buildings, exterior alterations to existing buildings, and fences and walls associated with development.



# RESIDENTIAL HERITAGE AREAS – S42A RECOMMENDATIONS (recommended changes shown in red)

## 9.3.2.2.2. Policy – Identification, assessment and scheduling of heritage areas

- a. Identify heritage areas which represent important aspects of the Christchurch District’s cultural and historic themes and activities and assess them for significance to the Christchurch District according to:
  - i. whether the heritage area meets at least one of the heritage values in Appendix 9.3.7.1 at a significant or higher level; and
  - ii. the extent to which the heritage area and its heritage values contributes to Christchurch District’s sense of place and identity; has at least a moderate degree of integrity and authenticity; is a comprehensive, collective and integrated place, and contains a majority of buildings or features that are of defining or contributory importance to the heritage area.
- b. Schedule historic heritage areas that have been assessed as significant in accordance with Policy 9.3.2.2.2.(a).



New buildings, exterior alterations to existing buildings, and fences and walls associated with development.

